



WHITTLEBURY  
PARK

AN ALL-STAR VENUE  
SPORTS TEAM PACKAGE



## WHITTLEBURY PARK - 4\* CONFERENCE, TRAINING CENTRE, HOTEL & SPA

Our modern facilities situated in the very heart of the UK, in rural Northamptonshire, provide the perfect location for your event. Whether you are looking to hold a large scale conference, an exhibition, product launch or a small board meeting, we have the flexible space you need with large central spaces, break out rooms, conference areas and outdoor space.

Our dedicated corporate team is passionate about making your event a success by providing ideas and solutions that will provide real benefit to your business.

Your personal coordinator, backed by our extensively skilled team, will work with you to get just the right balance of help, guidance and support, adding value at every opportunity and ensuring the outstanding service you receive matches your requirements in every way.



## AN ALL-STAR VENUE

- With a dedicated team working hard to ensure your expectations are exceeded in every way, we'll ensure you receive a warm welcome and personal service
- Our award-winning hospitality is further enhanced with our refreshed meeting & syndicate rooms and coffee stations
- Easily accessible - set in the heart of the country within minutes of the M1 and M40, next to Silverstone circuit
- Purpose-built and professional event and learning facilities, catering for up to 3000 delegates
- Great value for money, offering a range of complete packages to assist in the budgeting for all your conference and event needs, ensuring there are no surprises or unexpected extras



# SPORTS TEAM PACKAGE

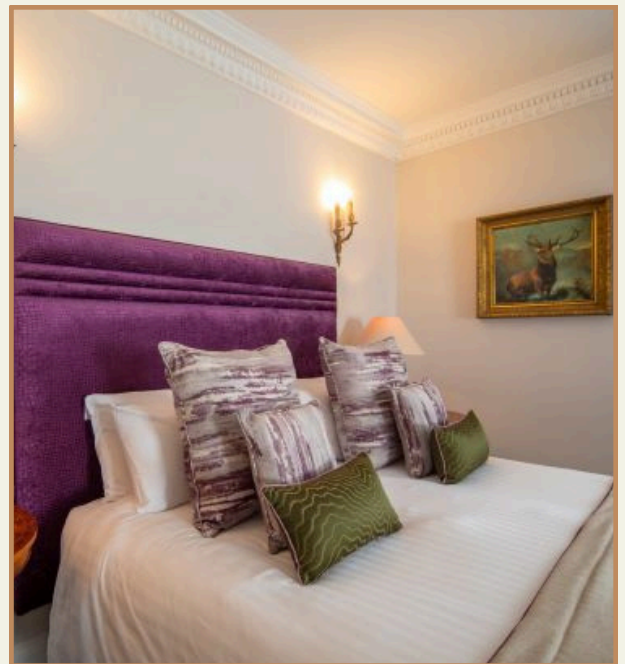


## ACCOMMODATION

All our spacious bedrooms are either doubles or twins with en-suite bathrooms, designed to offer the very best in comfort and decorated to provide an elegant and restful escape. We also offer a limited number of triple occupancy rooms.

Upgrade to a club room and you will receive luxurious bathroom amenities, bathrobe and slippers, wine and water, tasty treats in the room, and a daily-turn down service upon request. Some Club rooms overlook the golf course and although we can't guarantee them you can always request one in the comments of your booking.

All rooms offer complimentary Wi-Fi access for guests and a host of other modern touches to make your stay as easy and enjoyable as possible.



## HOW TO FIND US

Whittlebury Park is easily accessible no matter what your preferred method of transport is, whether it be road, rail, or air. Situated in the heart of the country and within minutes of the M1 and M40, perfectly placed between London and Birmingham. Plus with 650 car park spaces, parking is extensive and complimentary for guests.

For directions and details, visit:  
[whittlebury.com/easilyaccessible](http://whittlebury.com/easilyaccessible)



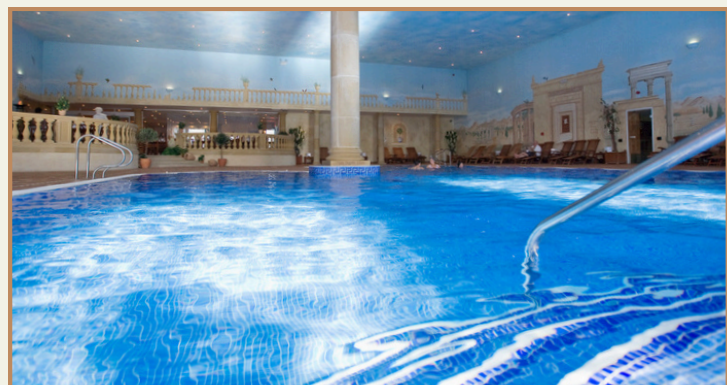
## AWARD-WINNING FACILITIES

Our spa's extensive Heat & Ice Experience facilities are designed to invigorate the body by providing different sensations as a result of changing temperatures. With steam rooms & saunas to increase your body's temperature and an ice cave to stimulate your circulation, eliminate toxins, and exfoliate the skin.

The Leisure Club also offers first-class facilities so keeping fit is a more pleasurable and enjoyable experience.

Our facilities include:

- Gymnasium - Atris by Technogym - with a new £350,000 refurbishment in June 2024, our gymnasium is fitted with a diverse amount of updated cardio equipment, a range of strength machines, and two dedicated areas for free weights
- 19-Metre swimming pool with bubble jets
- Salt sauna
- Jacuzzi
- Body & mind studio



## FUELING CHAMPIONS

Our catering service is designed and dedicated to fuel athletes with delicious meals to enhance performance and recovery.

Let us take care of the food so you can focus on the win.



## GAME CHANGING FACILITIES

- 254 Bedrooms
- 19 Training & Meeting rooms
- 15 Syndicate Rooms
- **Capacities;**
  - 600 Theatre
  - 28 Boardroom
  - 28 U-Shape
  - 400 Banquet
  - 280 Cabaret
  - 400 Dinner Dance
  - 230 Classroom



## SAMPLE SPORTS TEAM PACKAGE

Our sample sports team package includes:

Evening buffet dinner

Overnight stay in a classic room

Full buffet breakfast

Buffet lunch and/or pre-match meal

Complimentary use of spa & leisure club facilities

Private dining room

Team meeting room

Kit & physio rooms

**Package pricing upon request**

Pre-match meals from £34 per head excluding VAT

Dinners from £40 per head excluding VAT

Private dining rooms quoted upon request

If you need any specific catering requirements,  
our chefs would be delighted to discuss.

# SPORTS TEAM PACKAGE

## ADDITIONAL EXTRAS

Team / Meeting room
Physio room hire
Room hire
Private dining room
Bedrooms for leadership
Kit / luggage storage
Ice recovery
Extra towels
Late check-outs
TVs and flipcharts in meeting rooms

## CONTACT US

Our dedicated team are more than happy to help, please let us know if you have any questions or if you require anything.



01327 850 490



[sales@whittlebury.com](mailto:sales@whittlebury.com)



[whittlebury.com/business](http://whittlebury.com/business)

## IACC CERTIFIED

Whittlebury Park is proud to have achieved an IACC certification demonstrating excellence and high quality standards in hosting business events & meetings.



## EV CAR CHARGING

We currently have six 22kw car chargers installed in our Atrium car park for guest use. These charging points are supplied by EV Dot, a leading independent charge point solution. You can pay for the charging through the EV Dot app or through your credit/debit card. You are able to monitor your charging through a user-friendly dashboard.



**miaList** 2024  
Celebrating Industry Excellence

**WINNER**  
**Venue Of The Year (Over 300)**